

Mentrail Guardrails

MENTRAIL guardrails for roads are manufactured to SANS 1350 - 1982.

Advantages

- Minimises vehicle accident damage and injury to third parties
- Protects valuable equipment inside and outside factories.

Material

SANS - 1350

Tensile strength:	Min 445 MPa
Yield strength:	Min 310 MPa
Elongation:	Min 22%
Thickness:	2.6 mm (Subject to normal mill rolling tolerances)

Mass

Standard Lengths (3810 Post Centres)

Uncoated:	40 Kg
Galvanized:	43 Kg

Curved Standard Lengths

Convex & Concave Radius (M)

5	10	12	15	20	40
---	----	----	----	----	----



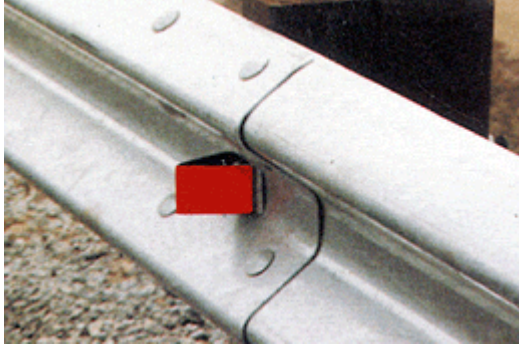
Accessories

Standard End Wing:	See Sketch
Bull-nose End Wing:	See Sketch
Splice Bolt:	M16 x 32 long
Post Bolt:	M16 x 50 long *
All Post Bolts 100mm Threaded End, except*	M16 x 150 long
	M16 x 200 long
	M16 x 250 long
	M16 x 300 long
	M16 x 350 long
	M16 x 400 long
	M16 x 450 long
	M16 x 550 long
	M16 x 600 long
Re-inforcing Plate:	75mm x 45mm x 3.5mm thick

Accessories Mass (Kg)

	Uncoated	Galvanized
Standard End Wing	8.40	9.07
Bull-nose End Wing	17.40	18.79
Splice Bolt		.13
Post Bolt		.15
M16 x 150 long		.30
M16 x 200 long		.35
M16 x 250 long		.41
M16 x 300 long		.48
M16 x 350 long		.56
M16 x 400 long		.66
M16 x 450 long		.76
M16 x 550 long		1.05
M16 x 600 long		1.23
Re-inforcing Plate		.10

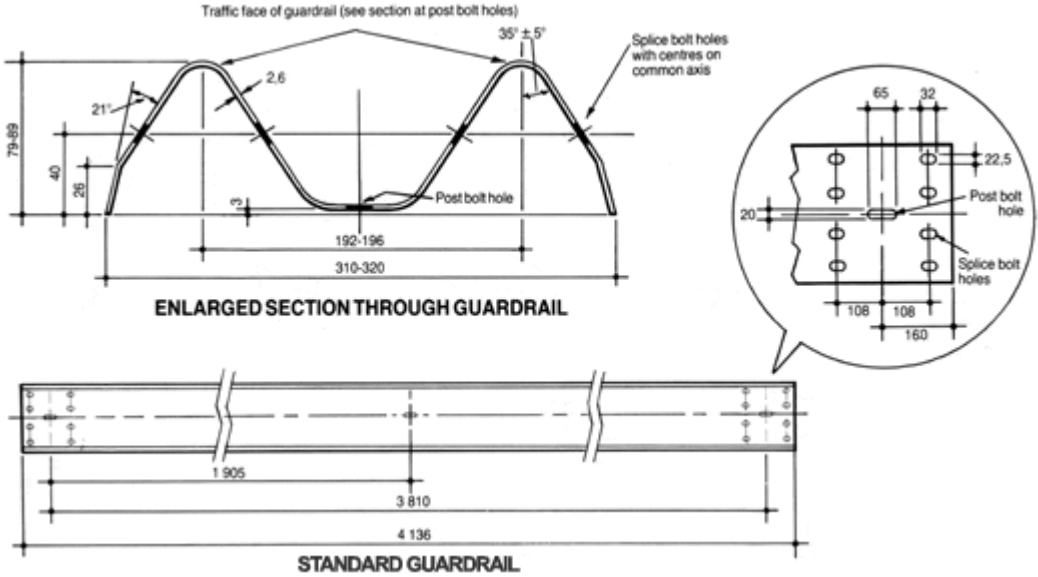
Reflector:	To Specify colour & size
Timber Posts:	To Specification
Spacer Blocks:	To Specification



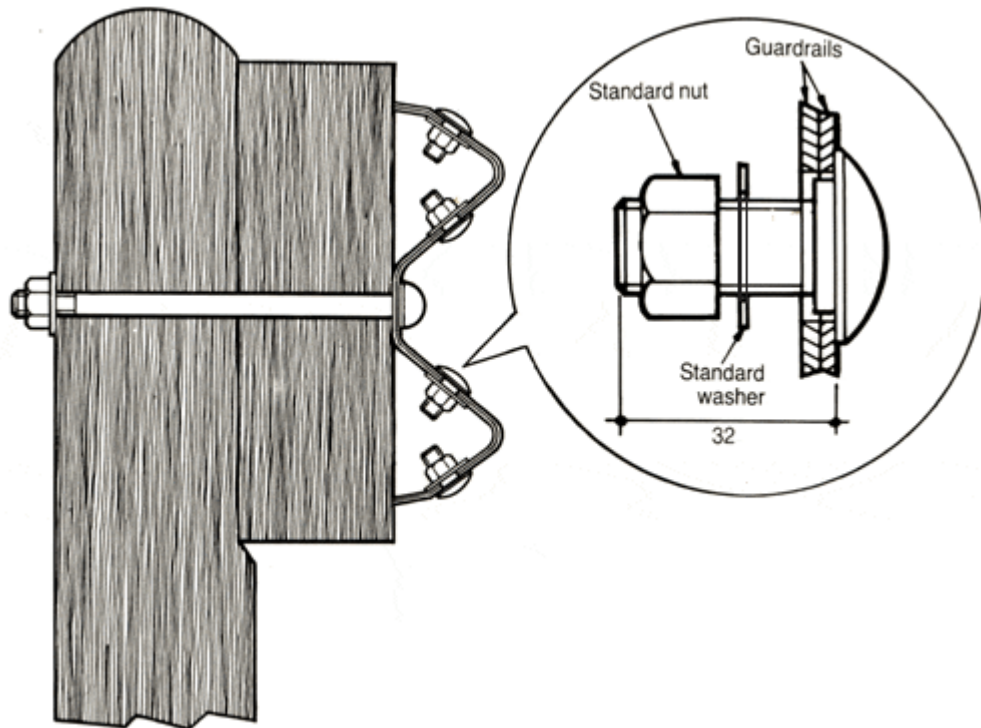
Mentrail Guardrails - Specifications

Please note that this page contains images only and may take time to load.

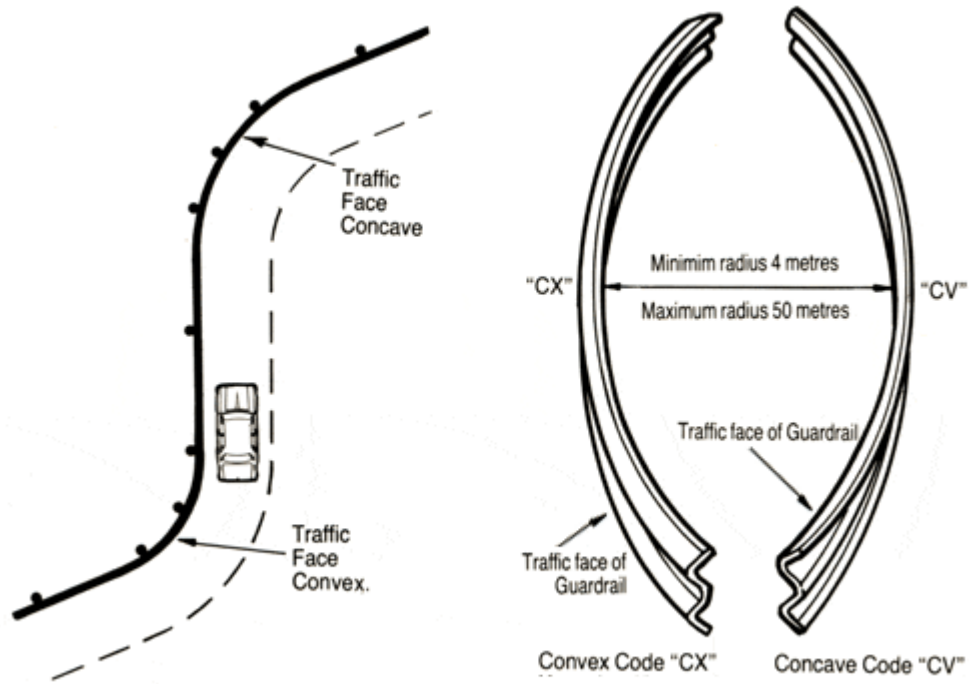
Standard Guardrail



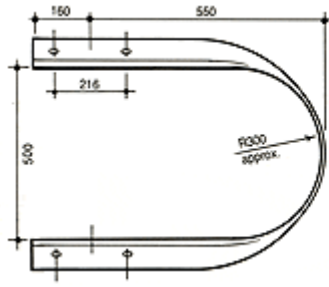
Typical Connections



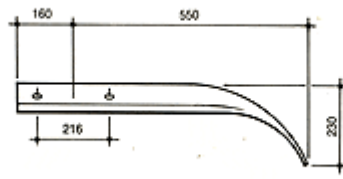
Curved Length Identification



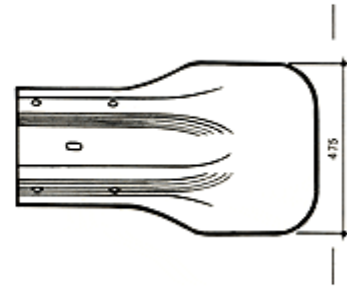
Gaurdail Ends



Bullnose End Wing-Plan



Standard End Wing-Plan



End Wing - Side View