

# Cold Formed Palisade Fencing Products

---

## Standard panels

- 30x30x2mm cold formed panels 19 palings with a gap of 110mm
  - 40x40x2mm cold formed panels 16 palings with a gap of 125mm
- Panels can be manufactured to be narrower in width than a standard 3.0m panel.

## Arched Panels

- A 3m x 8m arched panel ordered will have a 1.8m paling at the centre of the panel that would be the tallest paling and highest point of the panel.
- An arched panel goes down by 200mm from the highest point.
- If an arched panel with doggy bars is ordered, the doggy bars are welded on straight and not arched.
- It is not recommended that a customer takes spiked doggy bars, if they own pets, as the spikes on the palings can injure the animal.

## PALINGS

Palings are available in 2 angle sizes: 40 x 40 and 30 x 30

- The thickness of the material is 2mm.
- Palings come standard as a 7-spike or 3-spike, with a shallow tail at the bottom.
- Palings range from 300mm - 3 000mm.
- The palings are HOT ROLLED steel rolled in a COLD FORM process.

## DOGGY BARS

- There are 17 doggy bars on a 40 x 40 panel
- There are 20 doggy bars on a 30 x 30 panel

## GATES

- Pedestrian gates can be built into the main gate or separate.
- The gaps between the palings on a 4x 40 paling gate are 123mm and on a 30 x 30 paling gate are 105mm.
- 3,5m - 4,5m gates are wide enough for a car and 4,5m - 8,5m gates are wide enough for a truck.

## POSTS

- Posts are capped with a square domed post cap, which is welded onto a post.
- To determine the amount of posts needed to go with your panels, add one more post to the amount of panels ordered.



## Hot Rolled Palisade Fencing

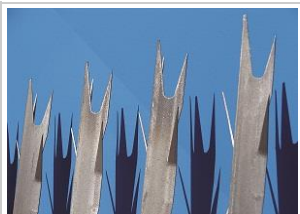
---

### **HOT ROLLED PALISADE PANELS**



- On a 40 x 40 panel, there are 16 palings spaces 120mm apart (available in Devils fork, 3 spike or 7 spike).
- On a 30 x 30 panel, there are 19 palings, spaced 110mm apart (available in Devils Fork only).
- On a 25 x 25 panel, there are 19 palings, spaced 115mm apart (available in Devils Fork only).
- Panels can be manufactured to be narrower in width than a standard 3.0mm panel.
- All panels 40 x 40 x 2mm angle back arms (back braces) standard.

### **PALINGS**



Available in 3 angle sizes: 40 x 40 30 x 30 25 x 25

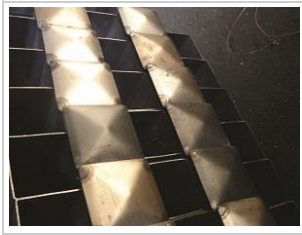
- The thickness of the material is standard 2mm (we can also provide 2.5mm and 3.0mm according to customer specification).
- 40 x 40 palings come standard as Devils fork with a 'V' round bottom or 3 spike or 7 spike with a flat bottom.
- 30 x 30 palings come only as Devils fork with a 'V' round bottom.
- 25 x 25 palings come only as Devils fork with a 'V' round bottom.
- Palings range from 500mm – 3 000mm.
- The palings are hot rolled standard angle iron.



## DOGGY BARS

- There are 17 doggy bars on a 40 x 40 panel.
- There are 20 doggy bars on a 30 x 30 panel.
- There are 20 doggy bars on a 25 x 25 panel.
- Doggy bars are 600mm high as a standard on 3.0m x 1.8m to 3m panels (we can change the height of the doggy bars to customer specifications).
- Doggy bars have no spikes (standard) or can be spiked as per customer specification.

## POSTS



- Posts are capped with a square domed post cap which is welded onto a 76 x 76 x 1.6mm (2.4m or 3.0m) square tube (post).
- To determine the amount of posts needed to go with your panels, add one more post to the amount of panels ordered.

## Galvanised Palisade Fencing

---

### GALVANISED PALISADE SYSTEM

#### Bolt together palisade systems

We manufacture a **bolt together palisade system** which has numerous advantages over the welded panel system.

- Bolt-on Palisade fencing allows the terrain to be followed so that the fence is always close to ground level. Welded panel Palisade fences are often uneven when installed on sloping ground.
- Bolt-on Palisade fencing is easily installed by semi-skilled staff as there is no welding on site.
- Bolt-on Palisade fencing is easily transported to site.
- The anti-vandal bolt and nut system ensure that the palings cannot easily be removed.



- Sections of the fence can easily be replaced if damaged by falling trees, etc.

## PANELS

- The panels are manufactured in a standard width of 3 000mm.
- Narrower widths can be assembled by simply cutting the horizontal cross members (back arms) provided to suit.
- There are 16 palings per panel.
- When using the PREMIER palings (56mm cover width) the palings will be spaced 126mm apart (182 mm centre to centre)
- When using the ECONO palings (40mm cover width) the palings will be spaced 142mm apart (182mm centre to centre)

## PALINGS

The preferred PREMIER range palings are available in a 40 x 40 section which has a cover width of 56mm.

A narrower ECONO range paling is also available in a 30 x 30 section which has a cover width of 40mm.

Both the PREMIER and ECONO range is available in either a 3 or 7 spike option as shown below.



3 SPIKE GALVANISED PALISADE PALING



7 SPIKE GALVANISED PALISADE PALING

The palings are manufactured from Z 275 lock forming quality pre galvanised material in a standard thickness of 2mm.

The palings are slotted with 2 square holes that accommodate 8mm bolts

# Bolt On Palisade Fencing Products

---

We manufacture a **bolt together palisade system** which has numerous advantages over the welded panel system.

- Bolt-on Palisade fencing allows the terrain to be followed so that the fence is always close to ground level. Welded panel Palisade fences are often uneven when installed on sloping ground.
- Bolt-on Palisade fencing is easily installed by semi-skilled staff as there is no welding on site.
- Bolt-on Palisade fencing is easily transported to site.
- The anti-vandal bolt and nut system ensure that the palings cannot easily be removed.
- Sections of the fence can easily be replaced if damaged by falling trees, etc.



## PANELS

- The panels are manufactured in a standard width of 3 000mm.
- Narrower widths can be assembled by simply cutting the horizontal cross members (back arms) provided to suit.
- There are 16 palings per panel.
- When using the PREMIER palings (56mm cover width) the palings will be spaced 126mm apart (182 mm centre to centre)
- When using the ECONO palings (40mm cover width) the palings will be spaced 142mm apart (182mm centre to centre)

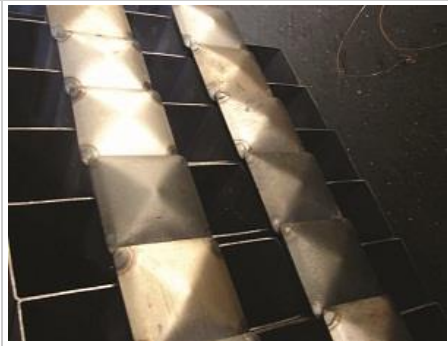
## HORIZONTAL CROSS MEMBERS (BACK ARMS)

- The cross members are manufactured from Z275 pre galvanised material
- The section is a 45 x 40 mm angle with a lip of 10mm on both ends and is 2.5mm thick
- This section provides exceptional strength and does not sag like similar products where conventional angle is used
- The end of each member is slotted which allows for easy adjustment when connecting to the post and post bracket.



## POSTS

- Posts are capped with a square domed post cap, which is welded onto a post.
- To determine the amount of posts needed to go with your panels, add one more post to the amount of panels ordered.



## Fencing and Wire Products

---



Galvanised, Black or Annealed, Diamond Mesh, Razor Barbed Type Wire and Galvanised Welded Precision Mesh.

- Standards: I beam, Y section - 2kg / metre
- Ridge back droppers - 0.56kg / metre
- Black Reinforcement - 2 400 x 6 000mm